

# Homes of the North Woods

Photo by Dana Wiezorek

**Real Estate Listings and Professional Services for  
Northern Wisconsin & Upper Michigan**



September - December 2022  
Published by Northland Media, LLC  
[www.bottomlinenewsandviews.com](http://www.bottomlinenewsandviews.com) Vol. 7 Issue 4



*A Collection of Bayfield Vacation Stays*



*BOOK YOUR BAYFIELD GETAWAY TODAY!*

 *@windseeker\_rentals*

**RESERVE@WINDSEEKERREALTY.COM**  
**(715) 779-5000**

**WINDSEEKERRENTALS.COM**

## Realtors

Anthony Jennings & Crew.....	4-9
Apostle Islands Realty.....	34-36
Blue Water Realty.....	26-27
Broad Street Brokers.....	16-17
By the Bay Realty.....	12-14
Coldwell Banker Iron River.....	28-29
Island Shores Group- eXp Realty..	18-20
McKinney Realty.....	31
North Star Realtors.....	32-33
Visions First Realty.....	3
Windseeker Realty.....	22-24
Windseeker Rentals.....	2

## Professional Services

#2 Septic Pumping & Excavating.....	11
A New Season.....	25
Granger Builders.....	11
Nelson Surveying.....	25
Northern State Bank.....	10
Pine Ridge Land Surveying.....	10
Quality Tree Service.....	21
Sears Hometown Store.....	30
State Farm Insurance, Daryl Jolma....	11, 25
Wausau Homes Ironwood.....	15

Published by

Northland Media, LLC

Dana Meske-Wiezorek

715-685-4871 • 64460 Gillis Rd

Ashland, WI 54806

dana@bottomlinenewsandviews.com

www.bottomlinenewsandviews.com



Making Your Real Estate Visions A Reality

## NOW OPEN

126 W. Bayfield St.  
Washburn, WI 54891

Office: 715-812-1135

Info@VisionsFirstRealty.com

## Featured Listing

501 ST Cecelia Rd.  
Butternut, WI 54514



MLS#6104775



Scan QR Code to Learn More

Contact Us Today for more  
information on this listing and  
others in Ashland and Bayfield  
Counties.



## Our Crew is Here for You!



**Anthony Jennings**  
Broker/Owner  
715-209-6841



**Faith Mauritz**  
Supervising Broker/Associate  
715-813-9554



**Michele Tegen**  
Marketing Director  
Licensed Salesperson  
715-209-4184



**Alex Dempsey**  
Buyers/Sellers Agent  
715-312-2121



**Herb Mauritz**  
Buyers Agent  
715-292-4132



**Kayla Spencer**  
Licensed Personal Assistant  
715-292-6513



**Jesse Mauritz**  
Licensed Personal Assistant  
715-292-6513



**Ashley Spencer**  
Marketing Assistant  
715-292-6513



**Marilyn Wilson**  
Infrastructure Coordinator  
715-292-6513



**Bayard**  
Fur Therapy  
1-800-PUP-LOVE



Scan here to learn more about us!

*Assisting people  
in navigating their  
course to anchor  
their home &  
business for over  
thirty years!*

Agents available to serve you 7 days a week  
Office Hours M-F 9 AM-5 PM • Saturdays 10 AM-2 PM • Sundays By Appointment

**Love the Lake, Love the Land, Love the People**

**Anthony JENNINGS & Crew**  
Real Estate



**www.aijennings.com**  
**715.292.6513**  
315 Turner Rd., Ashland, WI 54806





## Commercial

**Cable-** The West Wind Resort on beautiful Lake Namakagon with over 400 ft of water frontage on seven+/- acres and is ready for you to dive right in! Live on site in the primary house and rent out six all-inclusive cabins.  
**MLS# 6103997 \$1,999,900**



## Commercial

**Hayward-** The Northern Pine Inn is a striking, European chalet style inn set on just over six acres with amazing exposure on HWY 27. Here's an incredible opportunity to take over this business/property.  
**MLS# 6104809 \$1,500,000**



## Commercial

**Washburn-** Easy to find in a quiet area of Washburn this commercial building currently has residential units in the upper level and multiple office spaces on the main level.  
**MLS# 6081396 \$999,000**



## Commercial

**Ashland - PRIME BUSINESS OPPORTUNITY ON PRIME LOCATION** and just steps away from Lake Superior on HWY 2 in the middle of downtown Ashland! With sweeping views of Chequamegon Bay.  
**MLS# 6102390 \$739,900**



## Commercial

**Washburn-** Thriving year-round state-wide destination spot! Brilliantly designed and meticulously cared for locals and visitors seek this place out for great food and home-like atmosphere.  
**MLS# 6093721 \$729,900**



## Commercial

**Ashland-** Set on just over seven acres this state-of-the-art clinic is beautifully landscaped and offers a huge parking area and separate garage with in-floor heat. Professionally designed, with over 4,000 sq ft.  
**MLS# 6093506 \$699,900**



## Commercial

**Ashland-** Phenomenal commercial location on Cty Hwy 2/Lake Shore Dr. in the heart of Ashland just blocks from Lake Superior! Meticulously maintained and beautifully designed, and renovated in 2006.  
**MLS# 6103965 \$699,900**



## Commercial

**Ashland-** Bring your business to this gorgeous country setting with a park-like front yard set on just over fifteen acres. Minutes from downtown Ashland.  
**MLS# 6097070 \$649,900**



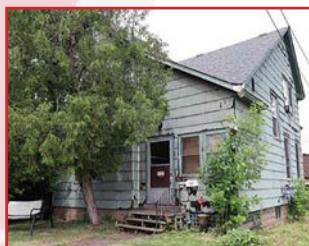
## Commercial

**Ashland-** Ashland- Prime Commercial Waterfront Location! 175 +/- feet of Lake Superior water frontage with over one acre of land currently operating as a successful eight-unit motel.  
**MLS# 6100957 \$599,900**



## Commercial

**Ashland - PRIME LOCATION** and just steps away from Lake Superior on HWY 2 in the middle of downtown Ashland! This is it! Just under a half acre perched atop the lakefront trail.  
**MLS# 6100653 \$539,900**



## Multi-Family

**Ashland-** This property to be sold as a package with three additional properties in the City of Ashland. Take advantage of this great package investment opportunity!  
**MLS# 6103990 \$389,900**



**Cornucopia-** Just under three+/- acres of land and over 200+/- feet of Lake Superior sandy water frontage on highly desirable Blueberry Lane in Cornucopia! Nestled in amongst a partially wooded property for privacy.  
**MLS# 6104590 \$389,900**

Anthony



JENNINGS

& Crew  
 Real Estate



[www.aijennings.com](http://www.aijennings.com)  
 715.292.6513

315 Turner Rd., Ashland, WI 54806





**Ashland-** Country living just minutes from downtown Ashland. Set back on twenty +/- acres this beautiful home and setting has a two car attached garage with 8' door and two car detached heated garage.  
**MLS# 6103815      \$324,900**



**Ashland-** Completely secluded main level living set back on ten +/- acres with detached two-car garage. Meticulously maintained with beautiful landscaping. This three bedroom, two bath home is ready for your family to enjoy.  
**MLS# 6104925      \$274,900**



**Bayfield-** Spectacular! Eight +/- acres with views of Lake Superior from these hill top parcels. Rivaling as the best view in Bayfield are the ideal place to construct that inspired new home.  
**MLS# 6101833      \$259,900**



**Ashland-** Stunning Victorian style home in the heart of Ashland. Set on over a quarter acre lot this five bed, three bath home with attached garage, has all the gorgeous character of yesteryear with modern updates.  
**MLS# 6104497      \$249,900**



**Mason-** This home and property exudes warmth and charm. Enjoy a main floor bedroom and absolutely decadent bathroom with a whirlpool tub and separate shower room. A cooks dream kitchen too.  
**MLS# 6102098      \$229,900**



**Active w/ Contingencies**

**Ashland-** Excellent income opportunity with this four-plex in the heart of Ashland. Situated on a spacious corner lot this property includes a detached garage and five off-street parking spots.  
**MLS# 6104582      \$220,000**



**Mellen-** Located on 5.99 +/- acres with mature pines perched atop of 750 +/- feet of Bad River frontage makes this property that overlooks the downtown of Mellen and the Penokee Mountain range.  
**MLS# 6101748      \$199,900**



**Ashland-** Absolutely gorgeous English style manor house located on sought after Chapple Avenue. This stunning home offers five bedrooms, two baths, attached garage and fenced in yard.  
**MLS# 6104976      \$369,900**



**Commercial**

**Washburn-** Take advantage of this HOT option! The Firehouse Bar is a well established business for the past twenty seven years and still going strong. Locals and visitors alike come for a great atmosphere.  
**MLS# 6099171      \$179,900**



**Ashland-** Bright, beautiful and completely renovated three bed, two bath home situated on a spacious corner lot in the heart of Ashland. New flooring, fixtures, carpet, countertops and more.  
**MLS# 6104924      \$169,900**



**Commercial**

**Ashland-** Move onto Main St. in downtown Ashland in this bright & cheery historic building! A warm welcome awaits with high ceilings and lots of light from the large storefront windows.  
**MLS# 6096632      \$164,900**



**Ashland-** Extremely spacious four bed, two bath, two car garage home on a corner lot in the heart of Ashland! The main floor includes a bedroom, laundry, eat-in kitchen with doors that lead to the deck.  
**MLS# 6102550      \$142,900**

**Anthony**



**JENNINGS**

**& Crew  
Real Estate**

**LIST  
WITH  
US!**

**www.aijennings.com  
715.292.6513**

**315 Turner Rd., Ashland, WI 54806**





**Ashland-** Three bed home with detached garage just blocks from Lake Superior. This home features two bedrooms on the main level, living room, eat-in kitchen, full bath and laundry/storage room.

MLS# 6103628 \$129,900



**Mason-** Just under 125 acres of desirable hunting land across the street from DNR land. Located between Mason and Grand View off Old 63 Road. Located about twenty miles southwest of Ashland.

MLS# 6103877 \$99,900



**Ashland-** Duplex in the heart of Ashland blocks from Lake Superior. This home has a newer roof, off street parking and some nice character. Live on site and rent out the other half or use as an income property.

MLS# 6103987 \$99,900



**Ashland-** Really nice duplex set on a huge lot with off street parking. Plenty of space to enjoy the outdoors for relaxation and recreation. Live on site and rent out the other half or use as an income property.

MLS# 6103988 \$99,900



**Ashland-** Duplex in the heart of Ashland. This house features a detached one car garage and off street parking. Situated on a spacious quarter +/- acre lot and just blocks from Main Street and Lake Superior.

MLS# 6104744 \$99,900



**Ashland-** Approximately 40 +/- acres located directly off Elm Hoist Road provides opportunities for hunting or recreational land in the township of Sanborn off of Elm Hoist Rd located on the Bad River Reservation.

MLS# 6101640 \$74,900



**Park Falls-** Just under 35 acres of prime hunting land. Now is the time to purchase this land and be ready to hunt by fall. Near Manitowish and Mercer which are destinations for boating, hunting, and more.

MLS# 6103884 \$69,900



**Ashland-** 35 acres located off Hwy 2 in the township of Sandborn approximately one quarter mile East of Reykdal Rd within a few minutes to Ashland and Odanah. Options for building, hunting or recreation.

MLS# 6101839 \$64,900



**Ashland-** Opportunity awaits with this fixer upper on a corner lot. If you're looking for a home to renovate this is a great option. The main level has a living room, dining room, kitchen and attached back room.

MLS# 6104810 \$59,900



**Saxon-** Partially wooded lot approx. 11 +/- acres, just off HWY 2 in the beautiful town of Saxon. Close to Lake Superior, Saxon is also known for it's numerous waterfalls including Superior Falls & Potato River Falls.

MLS# 6101429 \$52,900



**Iron River-** Approx. 14.18 +/- acres and 745 ft. of water frontage on a DNR unnamed lake in the town of Delta. Located between Iron River and Delta near the pike chain of lakes, recreational trails and the Delta Diner.

MLS# 6101421 \$49,900



**Ashland-** This house is ready for your renovation ideas. Completely gutted and in need of a roof it's ready for someone looking to remodel. The house is 1371 sq. ft. per assessors data.

MLS# 6102902 \$41,900

Anthony



ENNINGS

& Crew  
Real Estate

LIST  
WITH  
US!

www.aijennings.com  
715.292.6513

315 Turner Rd., Ashland, WI 54806





**Bayfield-** Picturesque wooded lot overlooks Lake Superior, Long Island and Chequamegon Bay, across the open green fairway at Apostle Highlands Golf Course.

MLS# 6086011 \$39,000



## Commercial

**Grandview-** Two +/- acre commercial lot conveniently located on the corner of US Hwy 63 and County Hwy D in Grand View. A great location for your business with excellent traffic exposure.

MLS# 6090729 \$33,900



**Bayfield-** Two wooded city lots located just off Wilson Ave between South 8th and South 9th Street. There is a small ravine on this property which will make it a more private and unique building spot.

MLS# 6100376 \$30,000



**Bayfield-** Two lots for the price of one with a shared well! Lots 19 & 38 Apostle Highlands Golf Course, located just off lucky hole #1 on Eagle Run Rd.

MLS# 6100381 \$25,000



**Ashland-** Approximately 0.32 +/- acres located at 18th Street E. Only a few minutes of Northland College, sports fields, downtown Ashland, and Lake Superior! Additional land available.

MLS# 6096643 \$20,390



**Ashland-** One and one-half acres in the City of Ashland awaiting your residential or commercial building. Located close to all of Ashland's amenities, Lake Superior, beaches, walks and marinas.

MLS# 6083192 \$19,900



**Ashland-** Approximately 0.48 +/- acres located off of Ellis Ave and 22nd St E. Only a few minutes away from Northland College, sports fields, downtown Ashland, and Lake Superior!

MLS# 6096638 \$15,500



**Ashland-** Approximately 0.16 +/- acres located on Ellis Ave. Only a few minutes away from Northland College, sports fields, downtown Ashland, and Lake Superior! Additional land available.

MLS# 6096641 \$15,500



**Ashland-** Approximately 0.96 +/- acres located by 18 Street E. Only a few minutes from Northland College, sports fields, downtown Ashland, and Lake Superior! Additional land available.

MLS# 6096644 \$14,900



**Ashland-** Approximately 0.16 +/- acres located on Ellis Ave. Within minutes of Northland College, sports fields, downtown Ashland, and Lake Superior! Additional land available.

MLS# 6096640 \$13,500



**Ashland-** Just over 1/4 acre of wooded land blocks away from Lake Superior. A nice opportunity to clear a space and build. Located on Toll Rd. on the east end of Ashland.

MLS# 6089773 \$13,400



**Ashland -** Approximately 0.32 +/- acres near Northland College, sports fields, downtown Ashland, and Lake Superior! Additional land available.

MLS# 6096645 \$4,500

Anthony



JENNINGS

& Crew  
Real Estate



www.aijennings.com

715.292.6513

315 Turner Rd., Ashland, WI 54806



# Anchor Your Business Here! Prime Location!



## Commercial Lease

**Ashland-** Outstanding Location & Lake Superior Views! 1040sq foot office space for lease on HWY 2 in Ashland. Two offices with reception area. Bright, welcoming spaces.

**MLS# 6101115     \$1,865/month**



## Commercial Lease

**Ashland-** Outstanding Location & Lake Superior Views! 2080sq foot office space for lease on HWY 2 in Ashland. Five offices with reception area, conference room, kitchen/break room, storage.

**MLS# 6094718     \$3,330/month**



## Commercial Lease

**Ashland-** Outstanding Location! 1040sq foot office space for lease on HWY 2 in Ashland. Three offices with reception area, kitchen, and storage. Bright, welcoming spaces with private entry.

**MLS# 6101114     \$1,665/month**



## Residential Lease

**Ashland-** Stunning historic Queen Anne style home guaranteed to take your breath away! This home has the grandeur, elegance, beauty, artistry and craftsmanship of a by-gone era, but with modern updates for complete comfort. New roof August 2021, new spray foam insulated attic, all hardwood floors professionally refinished. Located on historic Chapple Avenue just blocks from Main Street and Lake Superior. Three bedrooms and two baths.

**MLS# 6104777**

**\$2,350/month**



# Featured Listing



**Mercer-** A home to admire from every angle! Here's an incredible opportunity to add some magic and wonder to your life with this charming and unique Buckminster Fuller style geodesic dome home set on 1.3+/- acres with 211+/- ft. of Long Lake water frontage. A kaleidoscope of design this home offers expansive views of the lake along with a deck and enclosed gazebo. Three beds, two full baths and a finished lower level with wood burning stove and walk-out entrance. Let your imagination take flight and enjoy the whimsy of a spiral staircase that connects all three levels. Saunter to the lake and enjoy your own pier to launch a kayak, canoe or fishing line. Whether you choose to make this your year-round home or vacation getaway this is a home you'll treasure. Located at the end of North End Rd and surrounded by wise old trees for complete privacy and seclusion. A mow-free yard, two-car detached garage with skylight and workspace, treehouse and shed round out this amazing property. **GNMLS# 198307     \$388,000**

Anthony



JENNINGS

& Crew  
Real Estate

OVER  
100  
LISTINGS!

[www.aijennings.com](http://www.aijennings.com)  
715.292.6513

315 Turner Rd., Ashland, WI 54806





# Pine Ridge Land Surveying, LLC.

Professional Land Surveying Services

Value & Quality in a Timely Matter...



PROUD VETERAN  
OWNED BUSINESS!

## CALL TODAY FOR YOUR FREE ESTIMATE!

PATRICK A. MCKUEN, PLS  
PROFESSIONAL LAND SURVEYOR

UTILIZING THE VERY LATEST TECHNOLOGY TO ENSURE THE HIGHEST QUALITY SURVEYS

- BOUNDARY SURVEYS • CERTIFIED SURVEY MAPS(CSM)
- SUBDIVISION PLATS • LOMA'S • TOPOGRAPHIC SURVEYS
- LOT SURVEYS • ALTA SURVEYS • FLOOD GPS SURVEYS
- ELEVATION CERTIFICATES • BATHYMETRIC SURVEYS
- ROUTE SURVEYS • CONSTRUCTION SURVEYS
- DETAILED MAPPING SERVICES • CONDOMINIUM PLATS

**WWW.PINERIDGESURVEYING.COM**

715-682-2969 • 1424 1/2 Lake Shore Drive W • ASHLAND, WI 54806

*Proud to be forming strong banking relationships in  
our Northern WI communities since 1933.*



## NORTHERN STATE BANK

### Refinancing or Buying?

- Talk Face to Face  
with our Loan  
Officers
- Local Decision  
Making and  
Personal Service
- Competitive Rates

### SEE US FOR ALL YOUR BANKING NEEDS!

Checking, Savings, Money Market Accounts & CD's • Electronic Statements

• Debit Cards • Credit Cards • Safe Deposit Boxes • Mobile Banking



321 Main St. W., Ashland, WI 54806 • 715-682-2772 • [www.nsbashland.com](http://www.nsbashland.com)

Mellen  
715-274-2421

Glidden  
715-264-2421

Butternut  
715-769-3541

Hansen's IGA  
715-373-0417

# Granger

BUILDERS, INC.  
A COMPLETE BUILDING SERVICE



715-278-3269  
grangerbuilders.com



**Surprisingly  
great rates that  
fit any budget.**

**Daryl Jolma, Agent**  
2022 Lake Shore Drive E  
Ashland, WI 54806  
Bus: 715-682-5900  
jolmaininsurance.com

I can help you bundle your home and auto insurance, at a rate that may surprise you. Call me for a quote today.

Like a good neighbor,  
State Farm is there.®

State Farm Mutual Automobile Insurance Company  
State Farm Indemnity Company  
State Farm Fire and Casualty Company  
State Farm General Insurance Company  
Bloomington, IL

State Farm Florida Insurance Company  
Winter Haven, FL

State Farm County Mutual Insurance Company of Texas  
State Farm Lloyds  
Richardson, TX

2101550

Individual premiums and budgets will vary by customer. All applicants subject to State Farm® underwriting requirements. Availability and amount of discounts and savings vary by state.



Serving Ashland, Bayfield, Iron & Northern Price Counties

## PUMPING SERVICES

**\* Same or next day Monday - Friday \***  
Septics • Holding Tanks • Mound Systems  
• Carwashes • Grease Traps • Vault Privies



## RENTAL SERVICES

**Portable Restrooms • Mobile Restroom Trailer**  
Large Events - Weddings - Private Parties -  
Cabins - Construction - Golf Courses - Etc.

## EXCAVATING & HAULING

Land Clearing - Road Construction  
Foundations - Building Demolition & Much More!  
• SAND • GRAVEL • SCREENED TOP SOIL • COMPOST • ROCK  
- Dump Truck Hauling Services -



**no2septic.com**  
50181 St Hwy 13 Ashland, WI



**By The Bay  
REALTY  
&  
AUCTION**

**"Practicing Real Estate  
With Ethics"**

**715-682-7337**

**112 Vaughn Ave  
Ashland, WI 54806**



**www.bythebayre.com**



**Ashland** - Solid home that needs a little upkeep. Beautiful location on the corridor for access to walking, running, biking, etc.  
**MLS# 6104128 \$72,000**



**PENDING!**

**Ashland** - This is a one of a kind move-in ready home with style & beauty throughout. It is currently a functioning AIRbnb with a fantastic income. Many upgrades & near to the downtown. **MLS# 6103582 \$179,100**



**Lublin** - 3 bed, 2 bath home located on 14.41 acres, with 2 car attached garage.  
**MLS# 6100139 \$159,000**



**Ashland** - Great opportunity to have your own investment property. **MLS# 6103801 \$135,000**



**Mason** - Nice house with a full basement and nice country setting. This home features, main floor bedroom, living room, bathroom & kitchen. Full basement for storage. New electrical service just installed. 2 car detached garage.  
**MLS# 6103228 \$130,000**



**Ashland** - Currently being used as a rental property. Great opportunity. **MLS# 6103704 \$150,000**



**Cornucopia** - Very nice little small home/cabin. Property has a car-port, detached garage, steel shed & another small shed. Some trails on the property & has mature timber as well. **MLS# 6104539 \$150,000**



**Ashland** - Spacious 3 bed, 2 bath home. Bathroom on main floor and a master bath on second level. All bedroom on second level. Laundry located on main floor. **MLS# 6102505 \$99,000**



**PENDING!**

**Ashland** - Just minutes from Ashland! A garage that was converted into half living space. Located on 10 acres. **MLS# 6103120 \$105,000**



**Jessica Nettleton**  
(Broker/Owner)  
715-292-9209  
jstricker54546@gmail.com



**Rick Nettleton**  
(Broker/Owner)  
715-209-1654  
rick.nettleton@yahoo.com



**Jill Hendrickson**  
(Broker/BPOR/SFR)  
715-292-4873  
jillh75@hotmail.com



**Martin Hoglund**  
(Sales Associate)  
715-292-2870  
martinbythebay@icloud.com



**Cindi Pliss**  
(Sales Associate)  
715-292-1979  
cinid.pliss@gmail.com



**Terry Schemenauer**  
(Sales Associate)  
715-682-4792  
terrysche@gmail.com



**Pam Gervais**  
(Sales Associate)  
715-292-5253



**Mason** - Make this wonderful home your own. This home features a large living room with a attached kitchen, with 3 eds on the main floor including a large master bed with a huge master bed. Which features a whirlpool bathtub, ceramic tile shower & a double vanity. **MLS# 6104732 \$290,000**



**Mellen** - Nice 3 bed home on a solid foundation. Features hardwood floors, 2 bath (1 on each level), 2 car garage (divided for 2 occupants). Conveniently located close to grocery store, school, gas station, parks and downtown Mellen. **MLS# 6103186 \$80,000**



**Ashland** - Five bed, 2 bath home located on Prentice Avenue. **MLS# 6099778 \$74,900**



**Ashland** - Well maintained ranch home with open concept livingroom with an eat in kitchen area. Nice corner lot, fenced in area & wrap around deck. The home features 2 main floor beds & a finished basement. **MLS# 6104534 \$195,000**



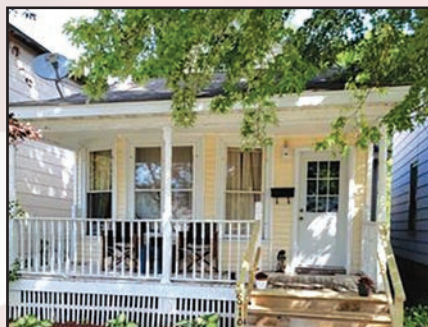
**Ashland** - Cute home on Lakeshore Drive. The lot next door is included in this listing. The area behind the lots is city property. **MLS# 6103705 \$175,000**



**Ashland** - Single story home with one bedroom on a corner lot. Great location, large lot. The home needs some TLC but has great potential. **MLS# 6102713 \$67,000**



**Saxon** - 3 bed, 2 bath ranch style home located on 160 acres with mature trees! Full basement with high ceilings. **MLS# 6104758 \$385,000**



**Ashland** - Starter Home! 1 bed, 1 bath home located on Prentice Avenue. **MSL# 6099785 \$65,000**



**Ashland** - 2 bedroom, 1 bath home located close to grocery store. Off street parking. **MLS# 6099798 \$60,000**



**HighBridge** - Nestled in tall pine, cedar & birch trees sits this cozy log home waiting for you. This 3bed, 2ba, 2 car garage is the perfect serene escape. Make delicious meals & memories from your newly renovated kitchen featuring dark granite countertops that pop against the surrounding beautiful oak woodwork. Lots 1, 3, 4, 5 & 6 included. **MLS# 6104471 \$440,000**

**Are you ready  
for a change?  
Call us Today!**



**By The Bay  
REALTY  
&  
AUCTION**

**"Practicing Real Estate  
With Ethics"**

**715-682-7337**

**112 Vaughn Ave  
Ashland, WI 54806**



**www.bythebayre.com**



## COMMERCIAL



**Washburn** - A great business potential or create your own hobby farm. The property is currently bringing in a boarding income for the owners. There is a huge potential with 14 enclosed stalls, tack room, automatic watering and electricity to each Paddock. There are 6 fenced in areas & one outdoor arena.  
**MLS# 6103311 \$689,000**



**Ashland** - 3 houses & 5 units on one corner lot. This is an exceptional corner lot with 3 curb lots. Very high visibility location. .60 acres in the heart of Ashland. Heavy traffic count. A traffic light on the corner for traffic flow & access. All units rented.  
**MLS# 6100831 \$500,000**

## LAND FOR SALE

**Ashland** - Great location on the edge of town. 2.7 acres. **MLS# 6103701 \$12,000**

**Ashland** - Ellis Avenue - Lot C - Located south of Ashland on Hwy 13 a quarter mile past Northland College, this lot is on what could be prime location for the expansion of the city of Ashland. **MLS# 6099732 \$12,000**

**Ashland** - Ellis Avenue - Lot B - Perfect for a single family dwelling and the opportunity to purchase more lots to start an even bigger project. **MLS# 6099731 \$14,000**

**Ashland** - Ellis Avenue - Lot A - This lot might be just the one that you have been looking for. Facing Ellis Avenue, this lot represents the future of Ashland. **MLS# 6099728 \$22,000**

**Ashland** - Old Railroad Grade - 28 acres located on a beautiful wooded parcel in Ashland County. Excellent access from the abandoned railway. Peace and quite - timber vaule, hunting land, development opportunity, etc. **MLS# 6099099 \$28,000**

**Ashland** - Beautifully wooded parcel with Hwy 2 frontage. The acreage is buildable per Bayfield County. Commercial/business use is possible. **MLS# 6102268 \$31,500**

**Ashland** - Beautiful recreational land on Hwy 112. **MLS# 6104277 \$42,500**

**Ashland** - .86 acres with older garage located in the city. **MLS# 6104347 \$49,900**

**Ashland** - 10 surveyed & subdivided city lots with electric & sewer connections in easy reach. This may be the best opportunity for development in the City of Ashland. **MLS# 6099703 \$68,000**

**Ashland** - 25 surveyed & subdivided city lots with electric & sewer connections in easy reach. This may be the best opportunity for development in the city of Ashland. Great buildable land & access from highway 13. **MLS# 6098972 \$75,000**

**Cornucopia** - Nice parcel to make your own. Large enough for a small hobby farm, and home, and close enough to public lands to make this a great base camp for summer, fall, winter and spring recreational activities. **MLS# 6104542 \$37,000**

**Mason** - Very nice wooded property. Heavily timbered property with mature hardwoods. There is a trail system in the property, but the access is on the neighbors (brother) property. **MLS# 6104843 \$90,000**

**White River** - Blakeman Road - Lots A, B & C - Great properties, buildable, huntable, close to Ashland on a country road near Hwy 13. **MLS# 6099588 \$17,500**



# You Dream It. We'll Do The Rest.

**Wausau Homes Ironwood has you covered from custom home design to move in and beyond!**

With our unique building process, our builders can take your vision and construct the perfect custom floor plan, assist in the selection of fixtures and finishes, and manage the entire project — with a Your Way, Firm Price, and On Time guarantee!

Wausau Homes Ironwood | 906.932.3157 | [estolaj@wausauhomes.com](mailto:estolaj@wausauhomes.com) | [WausauHomes.com](http://WausauHomes.com)  
Woodtech Builders, Inc | MI License #2102138193 | WI License #1414759



**87320 Eagle Bluff Dr, Bayfield**

Built in 2000 on 15+ acres \$550,000

Just like something you would see out of a film, this is an amazing, one-of-a-kind authentic Norwegian log home set on 15 +/- acres of mature hardwoods in the hills of Bayfield.



**402 E 6th Street, Washburn**

\$149,900

Simple, easy, main floor living; your kitchen, living room, full bath, laundry, and bedroom are all right there. Downstairs is a bonus with finished kitchen, rec room, two storage rooms, a walk-out door that connects to a sunroom and to the outside which makes it a very versatile layout! Large, private backyard perfect for gardening and entertaining.



**73150 Bjork Rd, Washburn**

Built in 2007 on 10 acres

\$340,000

Stunning spacious farmhouse with a charming and modern interior. Located between Washburn and Ashland, this property has plenty of acreage for grazing animals, a gorgeous pine forest and Bono creek frontage, as well as fenced in areas, a greenhouse, chicken coop, pig pen, woodshed, a two car garage and workshop, and fruit trees scattered across the landscape. Many great amenities and features.



**MLS 6102410, 7th Street, City of Bayfield**

**2 Buildable lots with city utilities**



**MLS 6104058 XXX86 Meyers Olson Rd**

**Bayfield, Lake View and Gorgeous!**



**MLS 6104058 xSpruce Tree Dr Herbster**

**1 Acre commercial**



**MLS 6104262 W Bayfield St. Washburn**

**Commercial, great location!**



## **Broad Street Update**

Our fire-damaged building at 39 S Broad Street is in the process of being completely restored. It will likely take until the winter to finalize, but we are just really thankful that it could be saved. The contractors are busy there and we are excited to see it all take shape. Until we're ready to move in, we remain at:

**14 S Broad Street, Bayfield**

**715-779-3220**



**Esme Martinson**

**715-209-5276**



**Suzie Arn**

**715-209-2259**



**Marieke van  
Donkersgoed  
715-292-4229**

# BROAD STREET BROKERS



**[www.broadstreetbrokersllc.com](http://www.broadstreetbrokersllc.com)**



**Island Shores**

REALTY GROUP

WWW.ISLAND-SHORES.COM

BROKERED BY **exp** REALTY



**Sally North** CRS, ABR, SRS

BROKER ASSOCIATE

715-747-2480 OFFICE

608-235-4235 TEXT

sally.north@exprealty.com



**Elena Tritchkova-Lamoreaux**

REALTOR

715-747-2480 OFFICE

715-209-4445 TEXT

elena.tritchkova@exprealty.com

**YOUR TRUSTED Island ADVISORS**

## Golf Course Condo



This Townhouse has been completely renovated from top to bottom. Wonderfully done, excellent design. This year-round home has an open floor plan that maximizes the views with a wall of windows that overlooks the Golf Course and Madeline Island Yacht club. Light and airy kitchen with plenty of storage, large island with seating also sliding glass door to a covered patio. Spacious two bedroom, three bathrooms, plus large upper loft area. Living Room features a wood fireplace, new bar with plenty of seating, high ceilings and sliding glass door to a huge patio. Full basement with washer and dryer, plenty of room for storage. Smaller attached garage that will fit your get around the island toys. All furnishings included. Exterior has just been professionally painted. Fiber-optic high-speed internet. Come enjoy the Island life and immerse yourself in the laid-back lifestyle and natural beauty of the area.

**MLS # 6104624 \$395,000.**

## Immaculate Golf Course Home



**Contingent**

This architecturally designed home was built to be timeless structurally and aesthetically. As you enter through the vestibule the spacious great room invites you in with natural light and beautiful lake views across the 15th green of the Madeline Island Golf Club. The well appointed gourmet kitchen is ready for the best of cooks and has a breakfast nook as well as a formal dining room. Space is not an issue with the four bedrooms. The master has a large walk in closet and a screened in porch to watch the sunsets. There is also a mother-in-law suite with kitchenette on the main level which has a separate entrance.

**MLS# 6103467 \$649,000**

## Tower Above



**SOLD**

Stunning uniquely designed two story home perched above 600' of Lake Superior shoreline and 10 acres of wooded privacy. Two octagonal 2.5 towers are connected by a large open solarium. Each tower has a Cupola room that has access by Walnut and Cherry Ladders both have 360-degree views. Main Floor Bedroom with bath, two second floor bedrooms both with baths. Large windows through home and custom wood work. Year round home. **\$689,000**

## Beachfront Beauty



**SOLD**

Wonderfully maintained waterfront property sits on 2.78 Acres. Large 700' sqft deck over looks 270' of private Lake Superior Shoreline. Two bedrooms on the main floor, and large upper level with bedroom/office with it's own private entrance. Second floor has an open floor plan with a family room and extra sleeping for those big family get-together's. Large firepit for your evening fun and the best sunrises with your morning coffee.

**MLS# 6103353 \$539,000**

## Clubhouse Lodge



**Contingent**

The Clubhouse Lodge is located on the 12th tee box of the Madeline Island Golf Club. It's close to town but situated on a private cul du sac. The cabin features 4 bedrooms and 2 baths all on one level. The kitchen and living room are combined which is perfect for entertaining and they also open up to the large screen porch overlooking the golf course. **\$319,900**



**Island Shores**

REALTY GROUP

WWW.ISLAND-SHORES.COM

BROKERED BY **exp** REALTY



**Sally North** CRS, ABR, SRS

BROKER ASSOCIATE

**715-747-2480** OFFICE

**608-235-4235** TEXT

sally.north@exprealty.com



**Elena Tritchkova-Lamoreaux**

REALTOR

**715-747-2480** OFFICE

**715-209-4445** TEXT

elena.tritchkova@exprealty.com

**YOUR TRUSTED Island ADVISORS**

## Year Round Living



Looking for year-round living all on one level - this is it! The well-maintained home features 3 bedrooms, 3 baths with attached garage and additional living space above. The custom features within are what demand attention. The gourmet kitchen includes custom cabinetry, granite baking station, walk-in pantry, stainless steel Wolf stove with hand painted Italian ceramic tile backsplash and a Sub-Zero refrigerator. You will be spoiled by the magnificent master walk in shower combining Italian ceramic tile and high-quality personal shower fixtures. Additional features include a Generac generator, in-floor and forced air heat, A/C, greenhouse, and carport for additional storage. This is a must see! **MLS# 6103933 \$349,900**

## Blank Slate



This property is a blank slate for your talents and ideas. Originally a part of Leona's Bar it was moved to this location to become a cabin. It is currently gutted and ready for new life! Beautiful 3+ Acres. The property has a well, holding tanks and electricity.

**MLS# 6103303 \$99,000**

## Amazing Views



Waterfront lot on North Shore Rd, Private 4.8 acres with mature trees. Driveway and two clearings already for you to build your dream home. Stairs to lead you down to 264 ft. of Lake Superior Shoreline, dock and a stunning few of the Apostle Islands.

**MLS #6104640 \$289,000**

## Waterfront Lot



Ready to build, amazing views. Holding tanks, drilled Well (needs Pump) and electrical pedestal ready to have electric set up. Hard to come by lower bank with 270" sandy beach. Seller Financing Available. **MLS# 6102665 \$245,000**

## 20 Acre Lot Big Bay Rd



The land has a varied forest with Maple, Oak, Poplar, and Hemlock. There is a cleared Building site, trails for hiking or ATV, abundant wildlife. Seller financing available.

**MLS# 610283 \$129,000**

## Lot 2 Middle Road



Lot 2 Deer Woods Estates. This 1.51 acre lot is ready to develop and is located near downtown La Pointe. It has shared driveway to access a lot and electricity near by.

**MLS# 609485 \$39,000**

## Golf Course Lot



Nice buildable lot on the 14th tee box of the Madeline Island Golf Course. The lot has access to municipal sewer and a shared well. It is located on a cul du sac just a short walk or bike to downtown La Pointe.

**MLS# 6102813 \$35,000**

**Contingent**

**FOR  
SALE**

**\$269,000**

**794 Main Street, La Pointe, WI**  
*Mission Hill Coffee House*  
**#105 COMMERCIAL RETAIL SPACE**

**GREAT BUSINESS OPPORTUNITY ON MADELINE ISLAND**



*The Heart of downtown La Pointe*

| *Mission Hill Coffee House* |

Retail Business + 629 Sq Ft Condo Unit #105  
included in price.

Proven retail location. Owner-operated business  
with a successful track record for the past 22  
years . Year round!

*Madeline Island's gathering spot is ready for  
it's next enterprising owner.*

#106 Condo Unit (next door) also available for purchase.  
Contact Sally North or Tina Nelson for details.



*Presented by* YOUR TRUSTED *Island* ADVISORS



STOP BY OUR  
CONVENIENT ISLAND OFFICE  
738 MAIN STREET

**Island Shores**  
REALTY GROUP

**WWW.ISLAND-SHORES.COM**

BROKERED BY **exp**  
REALTY



**Sally North** CRS, ABR, SRS  
BROKER ASSOCIATE  
715-747-2480 OFFICE  
608-235-4235 TEXT  
sally.north@exprealty.com



**Tina Nelson** GRI  
BROKER ASSOCIATE  
715-209-0049  
tina@island-shores.com





Serving the Greater Chequamegon Area

## Driveway and Private Road Repair and Maintenance...



**OUR MINI GRADER IS PERFECT FOR YOUR DRIVEWAY AND ROAD NEEDS!**

**Tree & Stump Removal • Lot & Road Clearing • Storm Damage Clean-Up**  
Fully Equipped with state of the art equipment and professional operators

## New Driveway Construction...



**We're On Top Of The Situation**



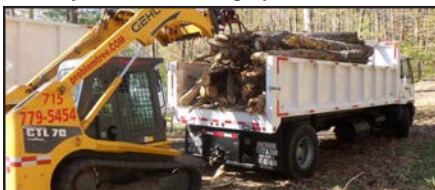
Portable stump grinder with remote control.  
Easy to work in hard to get places.



Our large capacity chipper takes up to 20" diameter, which makes quick work out of clean up.



65' working height bucket truck



General clean up of old rotten trees and stumps.



EXCAVATING: Trenches • Drain Tile



Dirt and dozer work

Quality Tree Service is working in your area now - call today for an estimate on the work you need done. We do it all safely and efficiently with minimal ground damage. Wood can be left for firewood, or chipped up and hauled to local nurseries for mulch. We are the very best at what we do.

**715-779-5454 • PROBLEM TREE.COM • MARK HAZELQUIST**



**WindseekerRealty.com**

215 Rittenhouse Ave., Bayfield, WI 54814

**715-779-5000**

Agent@WindseekerRealty.com



**Jenna Galegher**  
Owner / Broker



**Dann Tervo**  
Sales Associate



**Katie Barningham**  
Sales Associate



**Brad Dryer**  
Sales Associate



**Brianna Bailey**  
Sales Associate



**Bayfield \$425,000**

EW CONSTRUCTION!! Built 2022, this home was built to perfection for the Northwoods! Schrock Construction Amish built log home, situated in the Apostle Highlands association on the golf green. Double insulation, Anderson & Marvin windows, french drain, and much more. Did we mention Lake Superior views

**MLS# 6102727**



**Bayfield**

Stay tuned for an exciting new offering!!



**Bayfield \$272,000**

Ideal large home located on the outskirts of Ashland. Large yard, 7+ bedrooms, 3 bathrooms, garage, outbuildings, and ample space makes this home perfect for a large family! Wood fireplaces in the basement and living room, front and back porches, upstairs four season room, utility rooms. brand new furnace. This home has it all.

**MLS# 6103488**



**Bayfield \$265,000**

Charming two-bedroom, two bathroom cabin nestled in Brickyard Creek Community. Find the trails and enjoy walks to the beach on Lake Superior. Just two miles North of Bayfield this property boasts peace and tranquility with easy access to everything Bayfield has to offer.



**Bayfield \$235,000**

A condominium in the heart of it all! One bedroom and one bath first floor condo overlooking Apostle Islands Marina, Madeline Island and Basswood. Bright and spacious with gas fireplace and walk out patio. Enjoy watching the boats pull in and out of the marina from your living room.

**MLS# 6103197**



**Cornucopia**

Stay tuned for an exciting new offering!!



**Bayfield \$175,000**

Ready-to-build lot with breathtaking views of Lake Superior. Slightly less than 1 acre with access to the lake. Fiber and electric utilities ready for hookup. Driveway is roughed in off Hwy 13. East facing lot allows for beautiful sun and moon rise over the lake.

**MLS# 6101856**



**Bayfield \$207,500**

I"Turn-key" half-share ownership entitles you to 26 weeks of Bayfield fun! Ensures major holidays and prime vacation weeks at least twice per four-year cycle. Third floor three bedroom, two bathroom condo with views of Lake Superior, private entrances and wrap around deck. Whirlpool tub, cathedral ceilings, gas fireplace, wood and ceramic tile floors.

**MLS# 6104202**



**Bayfield \$160,000**

Lake view near the heart of Bayfield! 3 bedroom, 2 bathroom home, single level living. Lake Superior views, just a few steps from Big Ravine Hiking trail and snowmobile trail

**MLS# 6102408**

**WindseekerRealty.com | (715) 779-5000 | Agent@WindseekerRealty.com**



**WindseekerRealty.com**

215 Rittenhouse Ave., Bayfield, WI 54814

**715-779-5000**

Agent@WindseekerRealty.com



**Jenna Galegher**  
Owner / Broker



**Dann Tervo**  
Sales Associate



**Katie Barningham**  
Sales Associate



**Brad Dryer**  
Sales Associate



**Brianna Bailey**  
Sales Associate



**Drummond \$90,000**

Currently used seasonally this home has a lot to offer. Within walking distance from the Drummond School, Drummond Lake, and Bear Country Gas Station make it ideal for all. Home is located on a corner lot and comes with another large empty corner lot with utilities on standby. Garage is fairly new, and home is in good condition.



**Grand View \$65,000**

SOLD! Vacant land outside of Grand View.



**Bayfield \$70,000**

Beautiful two+ acres with stunning hill views. Located on Ashwabay Heights Rd, this property has a lot to offer. Close to Mt. Ashwabay and Big Top Chautauqua. Trails for biking, hiking and skiing. Site ready to begin building your dream home today!

**MLS# 6097452**



**Bayfield \$62,500**

Turn-key, quarter-share condo ownership entitles you to 13 weeks of Bayfield fun! Fully furnished with Whirlpool tub and gas fireplace. Centrally located in downtown Bayfield with great vacation rental revenue.

**MLS# 6103232**



**Bayfield \$59,000**

Stunning views on a quiet corner lot, this property has a lot of potential and is within walking distance of all Bayfield has to offer. Perfect spot to build a quaint seasonal or forever home overlooking Lake Superior. 0.55 acres. Water, sewer, electric available.

**MLS# 6103307**



**Cable \$60,000**

A wonderful 12-acre lot on Spirit Point Rd. Close to the Village of Cornucopia shops and restaurants. Nestled in the woods, this property has deeded access to Lake Superior close by. Electricity and fiber located out on Spirit Point Rd.

**MLS# 6099910**



**Bayfield \$31,000**

Beautiful Bayfield building site on 0.3 level acres with elevation that may provide future Lake Superior views. Quiet forested lot ready for the next adventure. Start building your Bayfield dreams today!

**MLS# 6105057**



**Bayfield \$26,000**

Lake Superior view building site located on the Apostle Highlands Golf Course. Just outside of Bayfield, this lot boasts easy access to town with peaceful views and a quiet setting. Priced to sell - check it out today!

**MLS#6085900**



**Bayfield \$29,000**

Lake Superior view building site. 1.5 acres in the Apostle Highlands association. Stubbed-in driveway, electric at road, and stunning views - see it to believe it! Adjacent lot also available for additional acreage. Check it out today!

**MLS# 6103158**

**WindseekerRealty.com | (715) 779-5000 | Agent@WindseekerRealty.com**

September - December 2022

23



**WindseekerRealty.com**

215 Rittenhouse Ave., Bayfield, WI 54814

**715-779-5000**

Agent@WindseekerRealty.com



**Jenna Galegher**  
Owner / Broker



**Dann Tervo**  
Sales Associate



**Katie Barningham**  
Sales Associate



**Brad Dryer**  
Sales Associate



**Brianna Bailey**  
Sales Associate



**Grandview** **\$22,500**

Property located on the Historic 'Creamery Hill' in Grandview. Quiet out-of-town feel yet close enough to enjoy what Grandview has to offer. Come check it out today! Recorded Acres: 1.34 Calculated Acres: .34

**MLS# 6101611**



**Bayfield** **\$19,900**

Three city lots with the potential for phenomenal Lake Superior views. Property is fully wooded and connects to the powerline. Private yet within walking distance to all of Bayfield's amenities. Make these lots your own with all the possibilities they have to offer.

**MLS# 6103019**



**Bayfield** **\$12,750**

Lake Views in Bayfield! Two separate lots priced to sell. Walking distance from Bayfield these lots are worth checking out. Views of the lake and location make this property rare. Property is unable to be connected to the city well or sewer/septic due to close proximity utility building. Come check them out for yourself today!

**MLS# 6103949**

## COMMERCIAL



**Bayfield** **\$25,000**

BOAT SLIP. Roy's Point Marina Slip #10. 24-hour access. Natural beach. Clubhouse with lounge, decks, bathroom facilities. Storage lockers. Winter storage available. Parking available. Fuel and pump-out site. 30/50 amps shore power. Fresh water hookup. Cable TV. WiFi.

## COMMERCIAL



**Bayfield** **\$600,000**

Rare opportunity to own a boat house on Lake Superior in Bayfield. Nourse's Sport Fishing boat house includes 10 boat slips and dock with bubblers for winter. Bathroom w/ shower, workshop, bedroom/lounge with deck overlooking the lake.

**MLS# 6101070**



## Real Estate Brokerage & Property Management Services

- Advertise your rental property
- Manage lease agreements
- Coordinate contractors
- Find tenants
- Background and credit checks
- And more!

**WindseekerRealty.com | (715) 779-5000 | Agent@WindseekerRealty.com**

# A *New* SEASON

*for gifts | home décor | & more*



**420 Lake Shore Drive West  
Ashland, WI**

**Store hours: Monday-Friday 10am-5pm  
Saturday 10am-2pm**



**Need an agent  
who gets your  
small business?**

**Daryl Jolma, Agent**  
2022 Lake Shore Drive E  
Ashland, WI 54806  
Bus: 715-682-5900  
jolmaininsurance.com

I understand the unique needs of small business owners, because I run a small business too. Contact me today for your small business insurance.

**Let's talk today.**

State Farm Fire and Casualty Company  
State Farm General Insurance Company  
Bloomington, IL

State Farm Florida Insurance Company  
Winter Haven, FL

State Farm Lloyds  
Richardson, TX

2101257



*Surveying your neck of the woods since 1954*

***Providing all your  
surveying needs  
and delivering  
peace of mind.***



**101 West Main Street, Ste. 100 Ashland, WI 54806  
715-682-2692**

**[www.nelsonsurveying.com](http://www.nelsonsurveying.com)**

# ***Friendly dependable Real Estate service.***



**Jon Wheeler**  
Broker/Owner  
715-413-0452

**Kimberly Jones**  
715-209-3915



**Leon Wheeler**  
715-209-4423

**Ryan Hogan**  
715-331-9709



- If you need a Buyers Agent, we are here to help!
- If you need to sell a property, we are here to help!

**Search All Listings Online at:**  
[www.bluewaterrealty.org](http://www.bluewaterrealty.org)

**(715) 373-2583 109 W Bayfield St Washburn, WI**

***Friendly  
dependable  
Real Estate  
service.***



**Properties are still flying off the shelf at the speed of light!**

If you are looking for a property and are feeling discouraged, **HANG IN THERE!**

- New listings WILL keep popping up
- Make sure you are **PRE-QUALIFIED** for a loan if you need financing
- Get in to see listings that look interesting with your agent ASAP
- Work with an **AGENT YOU TRUST**
- When the time is right, make the best offer  
**YOU FEEL GOOD ABOUT**

Search All Listings Online at: [www.bluewaterrealty.org](http://www.bluewaterrealty.org)

**(715) 373-2583   109 W Bayfield St Washburn, WI**



PEGGY KMAN  
715.292.7000



CAROL KANGAS  
715.292.0354



KIM SAARI  
715.817.4606



MIKE SAUVOLA  
715.813.0525



We are **LEADERS**. We are **ORIGINATORS**. We are **VISIONARIES**. We are **Coldwell Banker®**.

#### xxx White River Rd Delta, WI



**\$39,000** - 40 acre parcel. No vehicular access, but land is adjacent to State land and can be accessed by foot. White River is a very close walk through Public Land.

MLS #6101193

#### 17-24 Pennsylvania Port Wing, WI



**\$40,000** - 8 city lots in downtown Port Wing. Close to Lake Superior and the Marina, with an easy commute to Duluth/Superior and Bayfield areas!

MLS #6102115

#### XXXX Tar Paper Alley Orienta, WI



**\$41,900** - Remote wooded acreage in excellent hunting country! Close to Lake Superior. Property is off road. Please ask for map.

MLS #6103162

#### XXX Quarter Mile Rd Iron River, WI



**\$75,000** - Located 1/2 mile north of Iron River, this 7.4 acres is a very peaceful and serene setting for your vacation getaway!

MLS #6104313

#### 15615 Beeksmas Rd Herbster, WI



**\$219,000** - This very private 20 acres, with off the grid cabin is only 2.5 miles from Lake Superior! Newly remodeled 2 bedrooms, 2 bathrooms.

MLS #6104480

#### 15125 Spruce Tree Dr Herbster, WI



**\$385,000** - Two large unheated pole buildings currently used as storage for boats, campers, and other large vehicles. Plus, 2 - 10 unit self storage buildings in the back.

MLS #6104267

#### 8805 St Hwy 13 Port Wing, WI



**\$169,000** - Excellent opportunity to be your own boss! Popular Bear Paw Cafe in Port Wing, WI is for sale! This cafe is in a great location with busy Hwy 13 frontage.

MLS #6099515

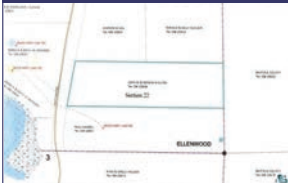
#### 000 Cty Hwy H Iron River, WI



**\$184,900** - Here is your chance to own 9.9 acres on The Pike Chain of Lakes! Property includes 450' of frontage on the Eagle Lake Channel.

MLS #6102165

#### Lot 2 Hart Lk Rd Iron River, WI



**\$64,200** - 5 acre wooded parcel perfect for home or cabin. Parcel features mixed hardwoods and many mature pine. Lot is 250' wide and borders county land to the rear.

MLS #6102383

#### 68690 Pine Creek Rd Ashland, WI



**\$199,000** - Popular with locals and visitors alike, the Pine Creek Pit Stop is located right on the Tri County Corridor for access by ATVs and Snowmobiles and is Centrally located, pulling clientele from all directions.

MLS #6100876

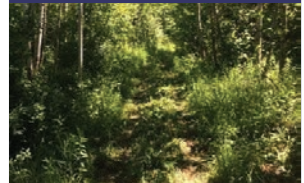
#### xxx Orienta Falls Rd Orienta, WI



**\$34,900** - Get away to Northern Wisconsin and be just a quick 1.5 mile drive to the shores of Lake Superior. Wooded parcel will make a good recreational, hunting or building site. 110v & 220v outlets throughout the shop area

MLS #6102947

#### xxx Town Line Rd Oulu, WI



**\$120,000** - Prime land just outside of Brule with road frontage and trails. There are several hunting stands on the property that will stay. 77 Ares. Go for a hike and check it out!

MLS #6103414



**COLDWELL BANKER**  
REALTY

8025 US Hwy 2 • Iron River, WI • 715.372.4090 • coldwellbankerhomes.com

©2022 Coldwell Banker. All Rights Reserved. Coldwell Banker and the Coldwell Banker logos are trademarks of Coldwell Banker Real Estate LLC. The Coldwell Banker® System is comprised of company owned offices which are owned by a subsidiary of Realogy Brokerage Group LLC and franchised offices which are independently owned and operated. The Coldwell Banker System fully supports the principles of the Fair Housing Act and the Equal Opportunity Act.



PEGGY KMAN  
715.292.7000



CAROL KANGAS  
715.292.0354



KIM SAARI  
715.817.4606



MIKE SAUVOLA  
715.813.0525



We are **LEADERS**. We are **ORIGINATORS**. We are **VISIONARIES**. We are **Coldwell Banker®**.

#### 68215 S Main St Iron River, WI -\$395,000



#6104791



- 4 Bedroom  
2 Bath
- .89 Acres
- 2 Car Garage
- Original Wood Fireplace
- Main Level Laundry
- Formal Dining Room

#### 15165 Spruce Tree Drive Herbster, WI -\$599,000



#6104268



- 7,536 Sq Ft
- 1.38 Acres
- Restrooms
- Heated Storage
- 200 amp electric
- Plenty of room for retail business

#### 79970 Cty Hwy A Iron River, WI -\$695,000



#6104854



- 3 Bedroom  
3 Bath
- 120 Acres
- 4 Car Garage
- In Floor Heat
- Barn, Chicken Coop, Greenhouse, Pole Buildings

#### 11583 E South Lk Blvd Lake Nebagamon, WI -\$880,000



#6104198



- 5 Bedroom  
4 Bath
- 1 Acres
- 5 Car Garage
- Ductless Mini Split Fireplace
- Formal Dining Room
- Guesthouse

#### 68740 W Long Lake Road Iron River, WI 54847-\$385,000



#6101712



- 2 Bedroom  
2 Bath
- 3.58 Acres
- 3 Car Attached Garage
- Fireplace
- 200' Angus Lake
- Tri County Corridor

#### 7755 US Hwy 2 Iron River, WI 54847 -\$2,900,000



#6101482



- Convenience Store and Carwash
- Bait & tackle area
- Office Suite
- Incredible Business Opportunity



**COLDWELL BANKER**  
**REALTY**

8025 US Hwy 2 • Iron River, WI • 715.372.4090 • coldwellbankerhomes.com

©2022 Coldwell Banker. All Rights Reserved. Coldwell Banker and the Coldwell Banker logos are trademarks of Coldwell Banker Real Estate LLC. The Coldwell Banker® System is comprised of company owned offices which are owned by a subsidiary of Realogy Brokerage Group LLC and franchised offices which are independently owned and operated. The Coldwell Banker System fully supports the principles of the Fair Housing Act and the Equal Opportunity Act.

sears  
HOMETOWN STORE  
LOCALLY OWNED AND OPERATED

**NO  
CREDIT  
REQUIRED**

**Lease It. Love It. Own It.**

**LOW** monthly payments  
**The Best Brands**

Whirlpool®



KitchenAid®



DEWALT

Husqvarna

## Ashland

811 3rd Street West  
Ashland, Wisconsin 54806  
715-685-2736 or 715-682-2736

Monday - Saturday 9am-6pm • Sunday 11am-4pm

Follow Promotions  
on Facebook



**NEW!**

1567713 - MASON. Private 440 acre parcel with hardwood forest, rolling farmland, private lake, a luxury home, guest house, assorted farm buildings, plus views of Penokee mountain range. \$2,300,000



**NEW!**

1567176 - BEAVER LAKE. Custom 3 bedroom log home on 23 wooded acres with 1,500+ frontage on Beaver Lake plus a private pond, 2 car attached garage plus 40X64 pole shed. \$1,625,000



**REDUCED!**

1562367 - LAKE NAMEKAGON. Luxurious lake-front home with a modern design and all the amenities, the 3 bedroom home sits only 45 feet from the western shore of Lake Namekagon. \$1,399,000



**REDUCED!**

1564784 - CABLE LAKE. Property offers 8+ acres of wonderful privacy with awesome eastern exposure for those beautiful sunrise views with different building sites that vary in elevation. \$749,000



1564879 - SPIDER LAKE (Iron River). Custom built full log home with 2 lake lots with 5.1 acres and 440 ft of lake frontage. The lakeside screened porch extends full length of home. \$699,000



**SOLD!**

1565522 - DRUMMOND. Log home with open floor plan, 3 BR, 4 season room, cozy loft plus private owner's suite upstairs, attached garage, 30 ft. x 40 ft. heated detached garage, and gazebo. \$549,000



**REDUCED!**

1564699 - CABLE/TOTAGATIC RIVER. Half log chalet style cabin, generator for electricity and wood burning stove. No running water but a tranquil creek meandering through the backyard. \$449,000



**REDUCED!**

1563577 - CABLE. 4 bedroom farmstead with guest home, sauna, petite barn with loft, bunk house/studio, chicken coop, machine shed, 48X50 fenced garden, and two root cellars. \$415,000



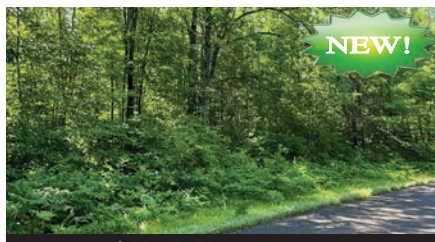
**NEW!**

1566791 - SPIDER LAKE (Iron River). Charming lake home offers open concept floorplan, 2nd story balcony, lakeside screened porch, 2.61 acres, 150 ft of waterfrontage. \$399,000



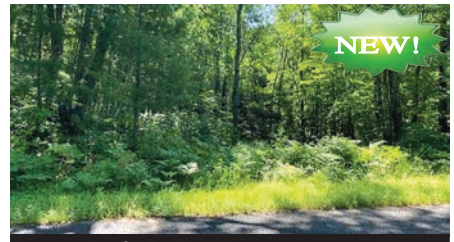
**PENDING!**

1566805 - BARNES. Charming home with a private yard encompassed by towering trees. This 3 bedroom, 1 bath home has a large kitchen and first floor laundry. \$85,000



**NEW!**

1567380 - CABLE. This 8+ acre parcel is secluded and private yet just a short distance to town. Heavily wooded the land is rolling offering numerous building sites. \$42,000



**NEW!**

1567384 - CABLE. This 7+ acre parcel is secluded and private yet just a short distance to town. Heavily wooded the land is rolling offering numerous building sites. \$35,000



Scott McKinney .. (715) 580-0093 .. scott@mckinneyrealty.net  
Stacey McKinney .. (715) 580-0126 .. stacey@mckinneyrealty.net  
Mike Best .. (715) 558-4014 .. mike@mckinneyrealty.net  
Cathy Midwood .. (715) 558-4744 .. cathy@mckinneyrealty.net  
Logan Arthur .... (715) 580-0112 .. logan@mckinneyrealty.net





7860 US Hwy 2  
Iron River, WI 54847  
715-372-5900



**John Podlesny**  
Broker/Owner  
715-813-0514



**Gary Gurske**  
Office Manager  
715-292-3907



**Sherri DeHahn**  
Broker Assoc.  
715-413-0230



**Mike Furtak**  
Realtor  
715-209-4935

## IRON RIVER



Turnkey custom-built year-round home with 2 + bedrooms, and 2 bathrooms nestled in between mature Maple, Oak, and Pine trees for ultimate privacy. Home is perched on a hill with spectacular majestic views facing east on Twin Bear Lake. Certified survey lot features 1.55 acres and 259 feet of waterfrontage from Twin Bear, one of the pristine lakes on the "Pike Chain" connecting with six other lakes! Open living concept with multiple levels and tongue and groove cathedral ceilings, sky lights, hardwood trim and doors, and large windows throughout for lots of natural lighting. **MLS# 6097557 \$799,000**

## IRON RIVER



Enjoy the awesome views and serenity as you watch the deer graze in the fields from the 12 X 16 composite deck on this beautiful very well maintained 2-bedroom, 1-bath log home. The combination of field and woods is perfect for a hobby farm (horses) and/or the serious deer hunter. Kolin Creek runs through 2 of the parcels. ATV/UTV trails run through the woods with permanent hunting stands included. 26 X 16 insulated garage plus a 8 X 12 garden shed. 120 acres. **MLS# 6096493 \$525,000**



[www.northstarrealtors.net](http://www.northstarrealtors.net)





7860 US Hwy 2  
Iron River, WI 54847  
715-372-5900



**John Podlesny**  
Broker/Owner  
715-813-0514



**Gary Gurske**  
Office Manager  
715-292-3907



**Sherri DeHahn**  
Broker Assoc.  
715-413-0230



**Mike Furtak**  
Realtor  
715-209-4935

## TROUT LAKE



Quiet, beautiful, and teeming with wildlife the 85 unbelievable very private acres surrounded on 3 sides by Chequamegon National Forest lands with 3,000+ feet of frontage on crystal clear, sand bottom, 39 foot deep, 15 acre Trout Lake. Your own private recreational/hiking trails are already in place. The Closed-Managed Forest Land entry will expire in 2026. This property is 1 of a kind. Must see to appreciate! **MLS# 6103513 \$1,200,000**

## DEEP LAKE



Deep Lake Lodge (2 2-BR, 1 Bath, 1 3-BR 1 Bath cabins) and Steakhouse located just feet from the shores of Deep Lake has been a favorite dining/destination for decades. Enjoy the breathtaking lake views from the 16 stool horseshoe shaped bar with it's 11 beer taps. 578 feet of sand bottom frontage and 5.35 acres provides potential flexibility to continue operations or redevelop the property. The dining room has 2 levels and seats 75 plus people. **MLS# 6102842 \$650,000**

## TURN KEY



The iconic Ino Bar is the "gateway to the Chequamegon National Forest". Located on US Hwy 2 halfway between Iron River and Ashland. This very successful business is the "watering hole" of choice for hunters, fishermen, or nature lovers. Ideally located just South of the Tri County Corridor Recreational Trail it provides food and drink for ATV, UTV, and snowmobilers. The 3 bedroom, 1 bath home could be the owners home or possibly a short-term rental. **MLS# 6102702 \$400,000**

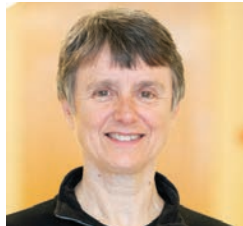
## BEST CORNER IN TOWN



On the corner of US Hwy 2 and County Hwy H! 40 X 80 stick built building with electric in-floor slab heat. 12 X 20 upper level office space. AC. Interior walls can be moved to change retail space sizes. 2-1/4 bathrooms, 1-1/2 bath (shower). 16 X 24 attached garage with storage loft. Currently contains a microbrewery, coffee shop, and construction office. Endless possibilities. **MLS# 6101236 \$325,000**



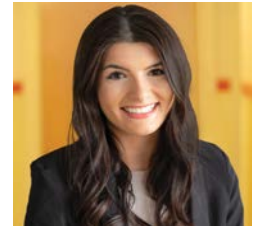
Anthony Jennings  
(715) 209-6841  
Anthony@aijennings.com



Kathleen Russell  
(715) 209-8140  
KRussell@ApostleIslands.com



Mirka Nelson  
(715) 209-2129  
MirkaNelson@ApostleIslands.com



Emma Rusch  
(715) 779-5807  
Asst. to Supervising Broker

## Start As A Visitor, End As A Neighbor



### Dome Sweet Dome

A home to admire from every angle! Here's an incredible opportunity to add some magic and wonder to your life with this charming and unique Buckminster Fuller style geodesic dome home set on 12+/- acres. A kaleidoscope of design this home has a bedroom on the main level, sweeping dining/living area, full bath and space for two beds upstairs. A deck on the front and back invites you and your friends to enjoy the island breeze surrounded by old growth trees. Let your imagination take flight and enjoy the whimsy of this unique home on Madeline Island. Whether you choose to make this your year-round home or vacation getaway this is a home you'll treasure. "We are called to be architects of the future, not its victims."- R. Buckminster Fuller.

#6105001 - \$250,000



### Historic School House

Bayfield- Converted into condominiums is an A+ place to live! These two separate units are located on the main floor and have master suites overlooking Lake Superior.

#6101956 - \$424,900



### Custom Detailed Condo

Bayfield- Lake Superior views and the ultimate in comfort this condo offers an extensive list of custom details. Granite counter tops, custom cabinets, 2 decks and more.

#6104680 - \$389,900



### Move Right In

Bayfield- Relax in this Waterford condo featuring views of Lake Superior. Three bedroom, three bath, spacious and designed for complete comfort with an open concept.

#6102671 - \$339,900



### Sweeping Lake Views

Bayfield- 10 acres with beautiful and mature oaks, conifers and maples. Property is located just outside the city limits of the City of Bayfield yet in a very peaceful country setting!

#6097776 - \$199,000



### Panoramic Views

Bayfield- 2.99 acres. Views of 3 states and 12 Apostle Islands! Surrounded by beauty on all sides, Bolder Pointe's spectacular hilltop is the idyllic place to build your dream home.

#6093427 - \$169,900



### Stunning Location

Bayfield- situated on just over six acres with valley, orchard, and Lake Superior views! Completely secluded at the end of the road with a variety of mature trees and wildflowers.

#6104489 - \$164,900



### Million Dollar View

Bayfield- 9.1 acres with gorgeous panoramic views of Lake Superior and the Apostle Islands. Stubbed-in driveway, cleared building area, electricity on site, and drilled well.

#6071605 - \$163,500



### Gorgeous Northwoods

Orienta- 80+/- acres of land in the gorgeous Northwoods of Wisconsin just outside Port Wing. Close to the beaches of Lake Superior this land is full of a variety of wildlife.

#6104188 - \$139,900



10 N First St, Bayfield, WI • [www.apostleislands.com](http://www.apostleislands.com)





**Anthony Jennings**  
(715) 209-6841  
Anthony@ajennings.com



**Kathleen Russell**  
(715) 209-8140  
KRussell@ApostleIslands.com



**Mirka Nelson**  
(715) 209-2129  
MirkaNelson@ApostleIslands.com



**Emma Rusch**  
(715) 779-5807  
Asst. to Supervising Broker

## Start As A Visitor, End As A Neighbor



### In the Heart of Washburn

Washburn- Unique property with a completely remodeled guest house above the garage and a main house with renovations in progress.  
#6101601 - \$134,900



### Superb Location

Bayfield- on the outskirts of Bayfield, these partially wooded lots are located on the corner of North Limits Rd and N 2nd Street with glimpses of Lake Superior.  
#6100375 - \$129,900



### Rooftop Lake Views

Port Wing- Two bed home with third unfinished room upstairs ready for your finishing touches. 22x70' with south exposure plus sun porch on west side.  
#6102478 - \$99,900



### Port Superior Shores

Bayfield- Where a Lake Superior view and your vision for Bayfield living awaits! Just under one acre of land ready for you to build your dream home.  
#6103409 - \$89,900



### Ready to Build

Bayfield- Just over one +/- acre parcel a block from the Brownstone Trail and beaches of Lake Superior. Ready for you to build with a cleared area, shared well, city sewer and electric.  
#6103413 - \$84,900



### Outskirts of Bayfield

Bayfield- these partially wooded lots are located on the corner of North Limits Rd and N 2nd Street. Glimpses of Lake Superior and the Madeline Island Ferry.  
#6100372 - \$79,900



### Bolder Pointe's Hilltop

Bayfield- 1.59 acres. Surrounded by beauty on all sides, Bolder Pointe's spectacular hilltop is the idyllic place to build your dream home.  
#6093428 - \$69,900



### Ideal Setting

Bayfield- This lovely lot is the ideal setting for your Bayfield dream home. Underground electric, a shared gravel drive. Lushly wooded property. Apprx. 1.61 acres.  
#6093760 - \$59,900



### Corner Lot w/ Lake View

Washburn- Build your dream home on this corner lot in the heart of Washburn with a view of Lake Superior from the street. 1.5 +/- acres with the driveway in on 12th Street.  
#6102729 - \$59,900



### Great Hunting Land

Herbster- 40 acres of land located off Lenawee road in Herbster. Containing mature trees, including birch and pine, this land is located in the stunning Northwoods of WI.  
#6081670 - \$42,900



### Great Location

Bayfield- So much potential with an "easy to visualize" end goal. 1.5 acres with incredible views including the mountain horizons of U.P. Michigan & on the golf course.  
#6102992 - \$42,000



### Ready to Finish

Washburn- Three bed, one bath home that was purchased to renovate and some of the remodeling has taken place. This property is ready for you to finish.  
#6103437 - \$41,900



### Across from Golf Course

Washburn- .9 +/- acres on the corner of HWY C and Evergreen Ct. directly across from the gorgeous golf course in Washburn. property has electric at the street and sewer at the driveway.  
#6103962 - \$39,900



### Great Highway 13 Exposure

Bayfield- .69 +/- acres on HWY 13 heading into downtown Bayfield ready for your vision to take place! This parcel has no restrictions and no covenants and is zoned RRB  
#6103407 - \$24,900



### Active w/ Contingencies Cleared and Ready

Port Wing- 150 +/- feet of waterfrontage set on just under nine acres with stunning Lake Superior views. The spot is cleared for your dream home or vacation paradise.  
#6104410 - \$194,500



### SOLD Downtown Bayfield

Bayfield- One of a kind fabulous sweeping views of the Apostle Islands and the Marina on Lake Superior. Three bedroom, two bath, top floor condo downtown Bayfield.  
#6104191 - \$484,500



10 N First St, Bayfield, WI • [www.apostleislands.com](http://www.apostleislands.com)





# EXPLORE

## The Area With Us

## START AS A VISITOR, END AS A NEIGHBOR

*...we'll help navigate your way*



### *Homes, Commercial & Condos*

Homes, Commercial, Condos, and Cabins to fit every lifestyle. Whether it's your permanent residence, vacation home, hobby farm or rental we'll help you find the perfect match.



### *Lakeshore, Land & Island*

View our Lake, Land and Island properties for sale including city, golf course, Lake Superior water frontage, lake view, inland lake waterfront, and Madeline Island properties.



### *Local Art for Purchase*

Our office is filled with a variety of art created by local artists. We've gratefully partnered with Artists Squared Gallery LLC to help showcase and fund the incredible talent in our area. Find a piece to grace your home.



**APOSTLE ISLANDS REALTY**  
**10 N FIRST ST**  
**BAYFIELD, WI 54814**  
**715.779.5807**  
**APOSTLEISLANDS.COM**

**Apostle Islands Realty**

